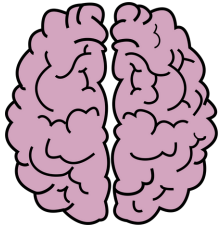


# Snapshot of the Ontario Traumatic Brain Injury (TBI) Report Card - 2021

## WHAT IS TRAUMATIC BRAIN INJURY (TBI)?



Traumatic brain injury is damage to the brain caused by a traumatic event such as a blow to the head, a fall, a motor vehicle or sports related injury.

## WHAT IS THE TBI REPORT CARD?

The TBI Report Card reflects the status of TBI care in Ontario. It includes 12 indicators that assess TBI surveillance, hospital care, rehabilitation, and community care using available data.

Taken together, the TBI Report Card shows healthcare administrators, policymakers, and stakeholders where TBI care is making progress and where improvements are needed.

The Ontario TBI Report Card looks at overall provincial performance across 2 fiscal years (2018/19; 2019/20) and will be reproduced each year. There are also fourteen regional report cards (using the former Local Health Integration Network (LHIN) boundaries).

Read the full report at [braininjuryguidelines.org](https://braininjuryguidelines.org)

The TBI Report Card is produced by a group of healthcare providers from across the province employed in different roles within the healthcare continuum.

Funding was provided by the Ministry of Health through agreements with the Ontario Neurotrauma Foundation and the University Health Network.

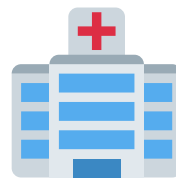
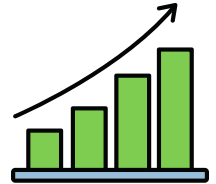


Provincial TBI Report Card  
Working Group ©2021

## KEY FINDINGS FROM THE 2021 ONTARIO TBI REPORT CARD

**2.5/1,000** Ontarians were seen in hospital with a moderate to severe TBI

**9.1/1,000** with a mild TBI/concussion and increasing



**10,841**

patients with a TBI were admitted to hospital in Ontario, and of these .....

**13%**

were admitted to specialized or general inpatient rehabilitation; wide range across provincial regions

**5%**

were discharged to long term care/ complex continuing care

**17%**

of persons with moderate to severe TBI are discharged home **with** support services

**18%**

of persons with moderate to severe TBI are discharged home **without** support services

**25%**



of days spent in hospital are at the inappropriate level of care (ALC)

## TIME TO ACCESS REHABILITATIVE CARE....

- Average of **25 days** to get into specialized inpatient rehabilitation (range of 16 to 29.5 days across provincial regions)
- Average of **14 days** waiting to see a Home and Community Care (HCC) Occupational Therapist or Physiotherapist and **53 days** waiting to see an HCC Social Worker or Speech Language Pathologist

## MEDICAL CARE IN THE COMMUNITY



**75%** of persons with TBI have a primary care appointment **within 30 days** of discharge from inpatient rehabilitation



**66%** see a physical medicine specialist  
**13%** see a mental health specialist physician  
..... **within 180 days** of discharge