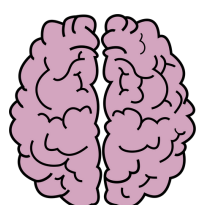


Traumatic Brain Injury (TBI)

Report Card Policy Brief

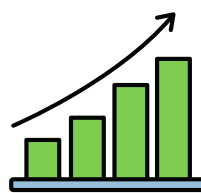
TBI Landscape in Ontario



Traumatic brain injury (TBI) is damage to the brain caused by a traumatic event such as a blow to the head, a fall, a motor vehicle or sports related injury

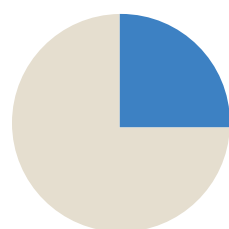


- **2.5/1,000** Ontarians were seen in hospital with a moderate to severe TBI
- **9.1/1,000** with a mild TBI/concussion



Concussion incidence and mortality from TBI is on the rise in Ontario

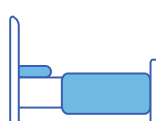
25% of days spent in hospital are at the inappropriate level of care (ALC)



Costs an extra \$1540 per person per day



Delays access to rehab



Reduces acute care bed availability

13% were admitted to either specialized or general inpatient rehabilitation; **7.5%** received specialized rehabilitation

Community-based specialized rehabilitative care is necessary, yet comprehensive data describing this care are not available



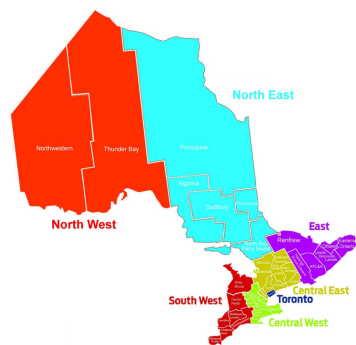
35% of persons hospitalized after TBI are discharged direct to home from acute care

75% of persons with TBI have a primary care appointment within 30 days of discharge from inpatient rehabilitation

within 180 days of discharge from inpatient rehabilitation

66% see a physical medicine specialist

13% see a mental health specialist physician



Rural areas have the highest rates of incidence, mortality and delays to care

Key Recommendations



Develop formal collaboration and information-sharing mechanisms between acute providers and specialized brain injury rehabilitation programs to ensure that everyone who could benefit from specialized brain injury inpatient care receives it



Implement standard referrals to Occupational Therapy, Physiotherapy and Speech-Language Pathology for every patient with moderate to severe TBI in acute care to ensure timely, comprehensive, interdisciplinary assessment



Develop and implement an integrated data system with mandated data collection that allows for integration of data collected across the continuum of care

Read the full report at:
braininjuryguidelines.org



Provincial TBI Report Card
Working Group ©2021

In collaboration with [the Ontario Neurotrauma Foundation](http://theontarioneurotraumafoundation.org)